

## *Youthlinc Fundraising Tips*

There are really only two things to remember when it comes to fundraising for your humanitarian aid trip:

- 1- Do your homework and be prepared, and
- 2- Remember that people WANT to help! Be confident!

Before you go out fundraising, think carefully over your options. Be aware that face-to-face interactions are infinitely more productive than phone calls, except perhaps in the case of family and friends.

For many of us, our family and friends are the first place to start. Four years ago before I went to Kenya, I sent out a holiday “card” which was simply a one page synopsis of why I was going to Kenya, with photos of the previous year’s trip as border. Photos of the children helped immensely, as well as describing exactly what my tasks on the trip would be. I asked for donations, included a self-addressed stamped envelope for people to return, and with relatively little work collected over \$800. I sent out around 35 letters, and included previous employers and friends’ parents. For those whom I did not hear back from, if I felt comfortable, I called to follow up and just asked if they had received the letter and if it was a bad time of year for a donation. I did not get one rejection when I followed up this way; in fact, people were embarrassed that they had forgotten to send a donation! I was sure to tell people they could use the donation as a tax write-off and that I could provide a receipt for tax purposes, but no one asked for one. Do be prepared to get a receipt from Judy if necessary.

I then went into the corporate world, with a similar letter explaining my plans and a copy of Youthlinc’s 501(c)3 (tax-exempt certificate) in hand (THIS IS A MUST). I went to places where I frequently shopped, went to customer service and asked for a manager, and explained that I had been a devoted customer for x-number of years. Generally, I was given either merchandise (film, things for the children), gift certificates, or money right on the spot. You should understand that most businesses allot a certain amount of money every month to charitable contributions, since it is a tax write-off for them and it helps boost business if they are community-friendly; BUT, by the end of the month the money is almost always gone, so make a point to hit these places during the first ten days of the month. Keep track of who you speak with and follow up if necessary. Send a thank you note within a few weeks to keep the lines of communication open, and to represent Youthlinc in the positive light it deserves. When you go out into public, business casual dress is optimum to be taken seriously (slacks, a nice shirt, etc.). Be prepared to explain Youthlinc’s mission of creating life-long humanitarians, and that the local rotary clubs are sponsors.

These are the major ways I raised money for my trips. Do not get discouraged if you are turned away; it will happen. Just keep on, and if you need further assistance, please contact me, Judy, or Terry, and we will be happy to help.

Happy fundraising!

Gina Coleman, Kenya 2002, Peru 2004  
Cell #860-5437

To all persons interested in helping a Youthlinc student:

The individual giving you this letter is participating in the Youthlinc program. He or she has made a commitment to serve up to 100 hours in his or her own community, attend a monthly meeting where he or she is mentored to take a leadership role at the international site, and spend two weeks of his or her summer vacation serving destitute communities in Kenya, Mexico, Peru, Thailand, or Cambodia.

This individual was selected for this program on the basis of his or her demonstrated commitment to service, dependability, reliability, and ability to get along well with others. He or she has committed a full Service Year to developing an intense service ethic, both locally and globally. This individual will work with an extended Youthlinc team of approximately 25 students and 8-10 volunteer mentors to deepen understanding of different cultures and the needs that exist in their own community and all over the world. This individual will 'graduate' from this program as a Service Leader, dedicated to work to better his or her community and empowered to make a difference.

Any support you can give this student is an investment, as the Youthlinc program aims to create humanitarians for life. The majority of our alums report that they continue to serve years after their involvement in the program. Consider the return on that investment as exponential over the course of this young person's life-time.

Youthlinc is a 501c3, so your contribution will be tax deductible. Youthlinc partners with Utah Rotary clubs, universities and colleges, professional associations, Utah businesses, and private individuals interested in investing in the humanitarianism of our youth.

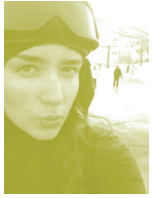
Visit our web site for more information [www.youthlinc.org](http://www.youthlinc.org) and do not hesitate to contact me with any questions.

Thank you for your consideration of helping to develop a life-time humanitarian.

Sincerely,

Judy Zone  
Youthlinc Executive Director

# Betsy's Journey to Kenya, Africa: January 2006



NEWS AND UPDATES ON BETSY'S HUMANITARIAN JOURNEY

Visit Betsy's website: <http://utahtimes.homestead.com/Index.html>

## Artwork Raffle for Donations



Betsy at the Art Access Gallery in downtown Salt Lake

Betsy is an amazing person and artist. For a couple of years she has taken art classes at Murray High where she is a junior and also through the Art Access summer program. During the summer of 2005 one of her prints, 'Looking for Love in a Lost Mind', was chosen to be in the Art Access gallery in downtown Salt Lake City, UT. It was sold to a woman who told the gallery she felt a connection to the piece. As a gift to those who donate \$100.00 or more to her journey to Africa, Betsy will be offering a copy of this same print along

with pieces of her beautiful pottery in a raffle. For every \$100.00 one chance will go into the raffle. This raffle will be held in March 2006. The lucky donors will then receive either an original print or a pottery piece handmade by Betsy. Betsy really appreciates all those who are donating to make this journey a reality. It has been one of her dreams in life to go and help the African children. She is very excited and working hard at her job and volunteering to make her dream a reality.

## Volunteer Service and Team Projects

As part of the YouthLINC experience it is required that all young people volunteer one-hundred hours in the local community before going to the international site. Betsy has been volunteering at Ten Thousand Villages in the Sugarhouse area. She also volunteered at the Salt Lake Boys and Girls Club over the holidays. In January she will be at the YouthLINC office and participating in her Kenya team projects. She is a member of the Key Club at Murray High and involved in their service projects.

## About Betsy.....

Betsy Rose was born in April 1989 in Murray, UT to Linda and Chris Auwerda. She lives with her mom who is a Reading Specialist in Murray District. She has two siblings, Nathan and Emily and a new sister-in-law, Jennifer. Betsy has lived her entire life in Murray and attended McMillan Elementary, Hillcrest Junior High and is currently a junior at Murray High School. Betsy enjoys expressing herself through the median of art. She works at Jamba Juice, enjoys photography, skis and works very hard at her studies at school to be an accomplished student. She is a kind person with a great sense of humor.

## About YouthLINC....

**O**ur goal is to encourage young people to develop an intense commitment to humanitarian service here and abroad.

Visit the YouthLINC website for more information:

[http://www.youthlincutah.com/index\\_home.html](http://www.youthlincutah.com/index_home.html)

## Donations Received

- KEN FITZGERALD OF THE MURRAY ROTARY CLUB (SCHOLARSHIP)
- GRANDMA & GRANDPA AUWERDA
- YOUR NAME COULD BE HERE
- YOUR NAME COULD BE HERE
- YOUR NAME COULD BE HERE
- YOUR NAME COULD BE HERE

## How to Donate

- Contact Betsy personally or through email. **kenya2006@gmail.com** She will send the information required for donations.
- Donate online at the YouthLINC site. Put Betsy's name in the student sponsored box.
- All donations made to YouthLINC are tax deductible. A receipt will be sent from the YouthLINC office.
- Donations made directly to Betsy are NOT tax deductible. They are a gift to her.
- For each donation of \$100.00 the donor will have one ticket in the raffle for Betsy's artwork. This raffle will be held in March 2006.
- All donations of any amount are appreciated and accepted.

Dear Family and Friends;

I am writing to tell you what I am up to and also to ask for your tax-deductible contribution that will help me travel to Peru with Youthlinc. I have received a sponsorship to pay for part of my expenses, but I still need to raise \$1200. Any help you can provide would be greatly appreciated.

I am currently a student at Bingham High School. I am involved in many things at my school including Bingham Madrigals and National Honor Society. I also have taken part in Bingham's Girls Lacrosse team, taken voice and piano lessons, and am holding a part time job at Papa Murphy's. I have been involved in many local service projects recently including being a counselor at a Muscular Dystrophy camp, serving as a friend at a local special needs mutual, tutoring girls in math, and singing and visiting with people living in a retirement home.

I am involved in an organization called Youthlinc. Youthlinc promotes local and international service by giving sponsorships for international humanitarian experiences. Students qualify to be members of Youthlinc by performing service in their communities. Through this organization I have been given the opportunity to go to Yanamono, Peru in July 2006 where I will be teaching kids in schools, building a store house, and working on a medical staff. In order to qualify for this service opportunity, I must complete eighty hours of local community service, and ask for donations to help defray the cost of the trip.

Enclosed is a brochure with additional information about Youthlinc. Also enclosed is the donation form to send in. If you are in a position to help, please send your donation by February 7th. The check needs to be made out to Youthlinc and sent to their office in order to receive a tax-deduction.

Thank you for your support

Bethany Mabey

Hello All,

I am writing you to tell you of a great opportunity that I have. I have been asked to be the medical person for a ten day humanitarian project in Mexico. The group that I am traveling with is called Youthline. Youthline is a unique program which encourages young people to develop an intense commitment to humanitarian service both here and abroad. In order to participate, students have to perform 60 to 100 hours of community service here in Utah. Students participate in a variety of local service opportunities, including working with Boys and Girls Clubs, the hospitalized and other needy or disadvantaged groups. After fulfilling local service requirements, students take their commitment to another level by participating in a two-week experience in a developing country.

The group that I am working with is comprised of special education, physical and occupational therapy students at the University of Utah, and a group of high school volunteers. We will be traveling to Ocotlan which is a rural town, just 40 minutes south of Guadalajara, Mexico. Here our group will partner with the staff and parents at La Escuela de Educacion Especial school for children with disabilities, the staff and community supporters of Guarderia Infantil (a center for children who have been removed from their families due to abuse or neglect) and the volunteers at DIF, Ocotlan's Division of Family Services.

The special education, physical and occupational therapy team will provide consults to approximately 100 families with special needs children. These consults will involve a medical assessment as well. Our staff will provide a variety of needed workshops for teachers and parents. The high school students will be working to install two wheelchair accessible bathrooms, wheelchair ramps around the school, a leveled playground, wood shelving, new desks and chairs, and give the school a fresh coat of paint.

I need your help to make this happen. I am using two weeks of my vacation to make this happen and it will cost me approximately \$1400.00 for my expenses. I am asking for monetary contributions to help me fund this. You can contribute directly to Youthline and direct it to my account. Any contribution is welcome.

Youthline is a 501c3 not-for profit and cash and in-kind donations are tax deductible in general. So program payments, and the contributions that donors make, are generally tax deductible. You can view Youthline home page at the following link.  
<http://www.Youthline.org>

Thank you,  
Eric Eiting